



**KING**

**LEAR**

By William Shakespeare

Starring

**James Pickering\***

[www.FreeShakespeareInThePark.org](http://www.FreeShakespeareInThePark.org)

**Peck Pavilion at Marcus Center for the Performing Arts**

\* Member of Actors' Equity Association

Put the epic tale of *King Lear* starring James Pickering in on your summer calendar now:

### Opening Night

Thursday, July 5<sup>th</sup>, 8 pm

Friday & Saturday, July 6<sup>th</sup> & 7<sup>th</sup>, 8 pm

Sunday, July 8<sup>th</sup>, 7:30 pm (*new time*)

Thursday-Saturday, July 12<sup>th</sup>-14<sup>th</sup>, 8 pm

Sunday, July 15<sup>th</sup>, 7:30 pm (*new time*)

### Matinee

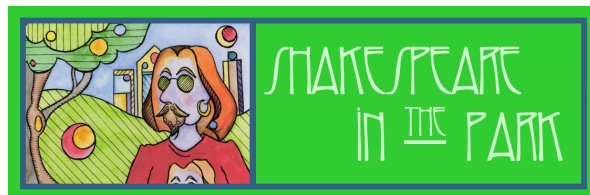
Tuesday, July 17<sup>th</sup>, Noon

Thursday & Friday, July 19<sup>th</sup> & 20<sup>th</sup>, 8 pm

### Closing Night

Saturday, July 21<sup>st</sup>, 8 pm

Pre-show entertainment nightly by **Quasimondo Physical Theatre** or **Madison Shakespeare Company**



No tickets or pre-booking; **general seating begins two hours before curtain** — arrive before then & queue until the house is officially opened, **or** after that, just walk up and look for an unoccupied seat and/or ask an usher for suggestions! We recommend you arrive **no later than 30 minutes** before the show.

**Friday and Saturday nights** do fill up, so if you anticipate arriving closer to show time, you might plan to bring a lawn chair.

**The seating space is covered**, but seats along the edges may still be exposed, so if the forecast is for rain, bring a poncho or rain jacket!

**Members of Shakespeare in the Park** have the opportunity to pre-reserve their seats — visit our website to learn about becoming a Member.

Enjoy concessions by



You are also welcome to bring a picnic.  
**No carry-in alcoholic beverages.**

Sponsored  
in part by:



Greater Milwaukee  
FOUNDATION  
*greater together*



THE BRICO FUND